

Review of Amateur Fisheries Regulations

Fiordland Marine Guardians

Our Vision: That the quality of Fiordland's marine environment and fisheries, including the wider fishery experience, be maintained or improved for future generations to use and enjoy

Presentation to Rec Fisher Focus Group, 14th December 2021

Fiordland (Te Moana o Atawhenua) Marine Area

Habitat lines define internal waters

- Commercial Exclusion Zones
- Tiered amateur bag limits

No accumulation rules

Rules around bulk harvesting methods



What You Told Us

Concerned about:

- Lack of robust timely data
- Fishing experience changing adversely
 - More fishing pressure than ever before
 - Localised and serial depletion
 - Harder to catch a feed
 - Pressure on stocks in internal waters
- Future compounding issues (eg climate change)
- Legacy for future generations

Recreational catch reporting

Spatial management

Bag/boat limits, seasons,
temporary closures

Education & Awareness

Build ecosystem resilience

Fish for a Feed

Further Development

Engagement:

- Hui with ACV Operators
- Southern Papatipu Rūnaka (Tangata Tiaki Hui)
- Survey
- Generated discussion: media, boat shows, newsletters

Data analysis:

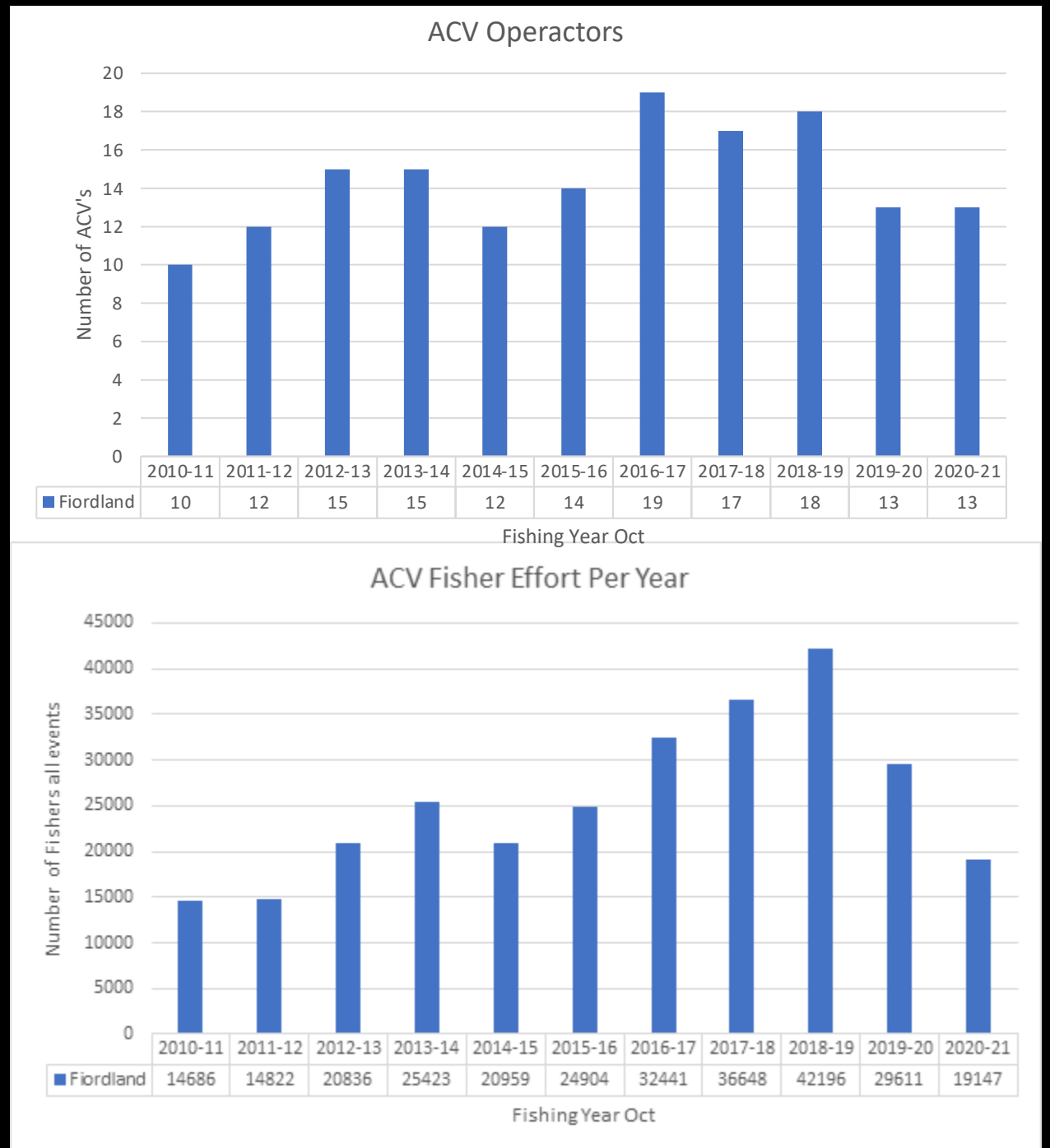
- Survey – local knowledge and lived experience
- ACV returns data, Commercial fishing effort data, Potting surveys



Change in Amateur Charter Vessel Effort 2010-2020

- Steady increase in number of registered ACV*
- Steady increase in fishing effort from those aboard ACV*
- Effort tripled between 2010 and 2019

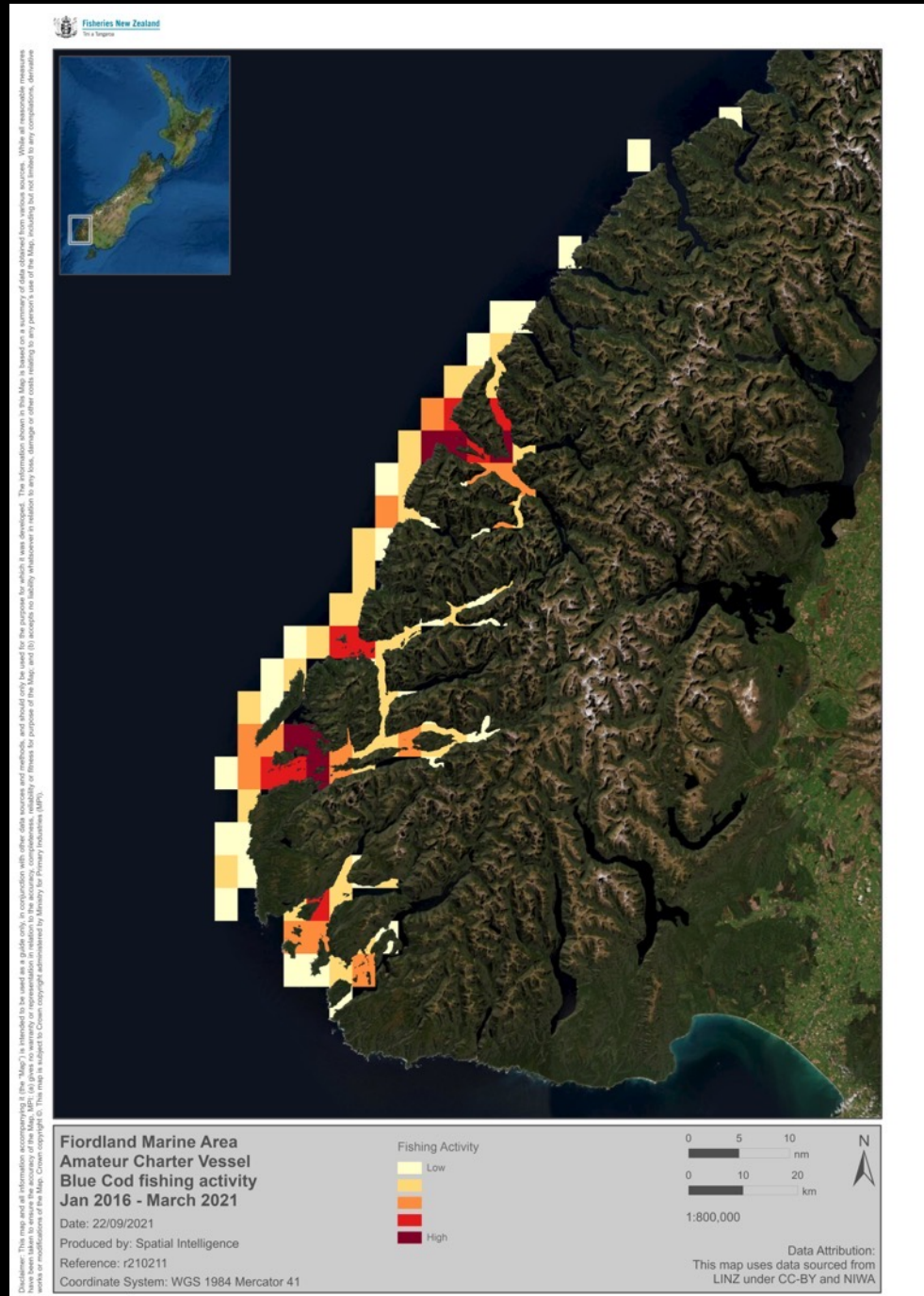
**accounting for disruption from 2020 due to pandemic and floods*



Amateur Charter Vessel Blue Cod Take Over 5 years

Concentrated in entrances to fiords:

- Outside the habitat line = higher bag limit
- More sheltered than open coast



Problem Definition:

More fish are being harvested inside the fiords than the fisheries can sustain

- Many fish stocks locally depleted
- Some stocks require a rebuild (e.g. scallops, hapuku, blue cod, pāua)
- Localised depletion inside habitat lines
- Effort concentration at fiord entrances causing localized depletion
- Fishing effort continuing to increase

Guardians' responsibility

"...maintain or improve for future generations to use and enjoy"

Factors Causing the Problem

ACV fishing pressure has increased due to:

- Increase in surface water consents, size of boats and frequency of charters; impact on fisheries is not considered as an environmental effect in coastal plan
- Increased demand for charters due to marketing and media
- Legislation treats all recreational fishers equally, regardless of platform

Independent recreational fisher pressure has increased due to:

- Increased access by pleasure boats with more capability than in the past
- Increased awareness and attraction to the area due to media

State of recreational fish stocks difficult to assess:

- Limited catch data collected due to lack of tool, no incentive to report catch
- Scientific monitoring expensive, slow and extractive

Recreational catch regulations a slow process to change:

- Regulatory process, lack of data, politics, consultation process

Our Recommendations

Data Collection

- Resource the development of an app for multispecies amateur catch reporting
- Establish citizen science to complement traditional stock assessments
- Develop non-invasive ways to monitor key stocks

Charter Vessels

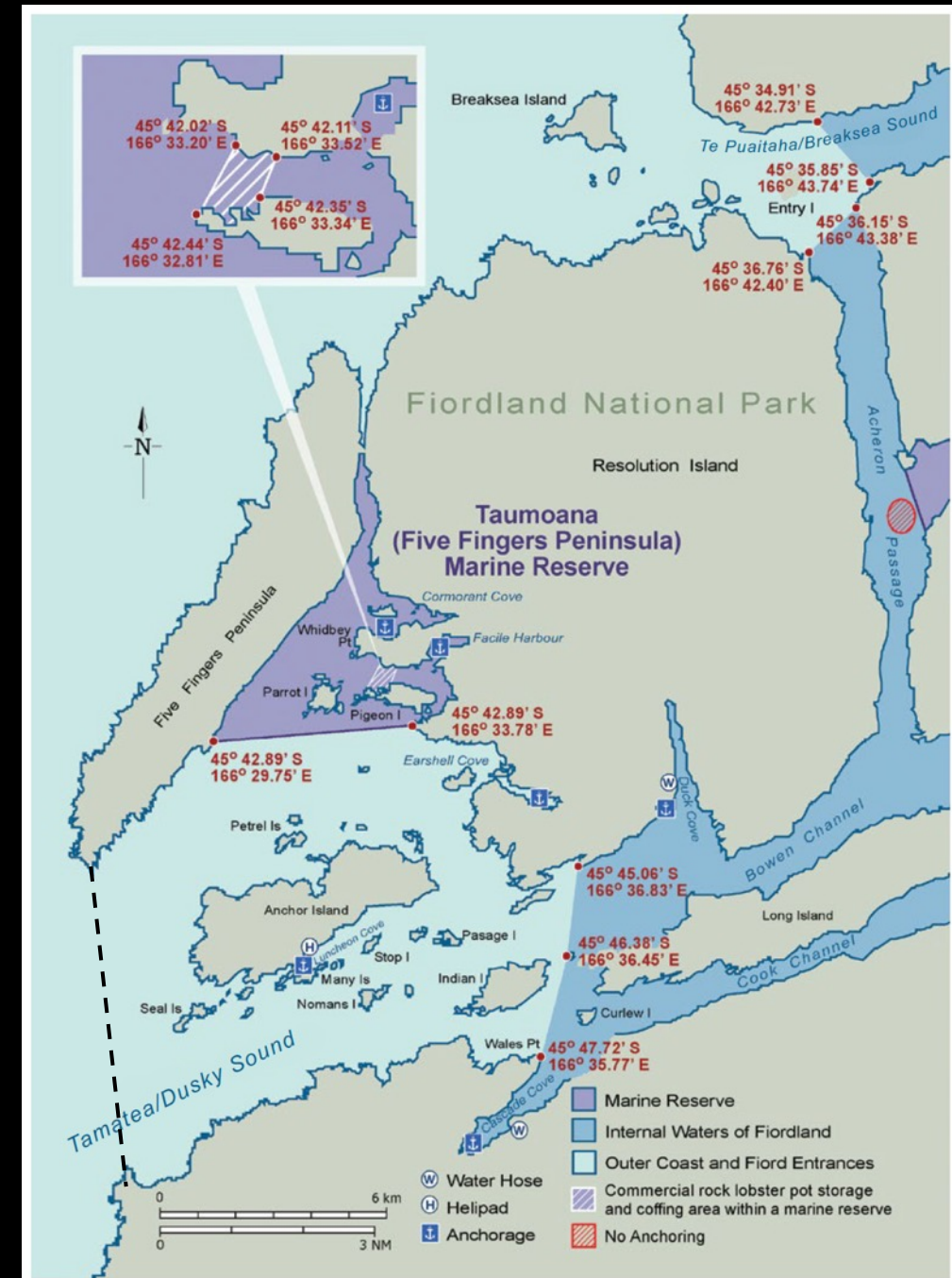
- Review fisheries policy to recognise charter vessels as subset of amateur fishers to enable fishing rules to be tailored
- Introduce Electronic Reporting/Geographic Position Reporting of catch

Bag Limits

- Reduce bag limits to align with *Fish For a Feed* philosophy
- Introduce 2-tier bag limits for more species
- Move the tiered bag limit demarcation line seawards
- Temporary closures on hāpuku and scallops in internal waters

Addressing Localised Depletion at Entrances

- Tamatea/Dusky Sound as example
- Habitat line is many kilometers inside the fiord
- Concentration of effort at entrance.
- Propose demarcating tiered bag limits by Fishing Line



What Does “Fishing For a Feed” Look Like?

	This feed	Current limits
rock lobster	6	15
pāua	10	10
blue cod	4	10
green bone	6	15
school shark	1	5
total bag finfish	11	30+



Proposed finfish bag limits

Current status	Proposal
Combined daily bag limit of 30 finfish per person of any combination of listed species with no accumulation.	Reduce combined daily bag limit to 10 finfish per person with no accumulation.
Daily limit per person in the internal waters is 3 groper/hāpuku. No monitoring of groper/hāpuku stocks in the FMA.	Close groper/hāpuku fishing in internal waters for 5 years. Develop non-lethal method to monitor hapuku (and blue cod).

Finfish species	Current Amateur Daily Bag Limit		Proposed Amateur Daily Bag Limit	
	Internal (inside Habitat Line)	External (outside Habitat Line)	Inside Fishing Line	Outside Fishing Line
Blue cod/rāwaru	3	10	1	10
Groper (Hāpuku)/ Bass	3	5	0	1
Sea perch/ Jock Stewart	10		1	10
Tarakihi	15		1	10
Trumpeter	15		1	4

Proposed shellfish bag limits

Current status	Proposal
No daily bag limit for shellfish.	Introduce a daily bag limit for shellfish of 150. All shellfish to be included in this bag, not just those listed.
Currently max. daily limit of 10 scallops.	Ban scallop take from the entire FMA.

Shellfish species	Current Amateur Daily Bag Limit	Proposed Amateur Daily Bag Limit	
		Inside Fishing Line	Outside Fishing Line
Cockles	150	20	
Kina	50	20	
Mussels	25	10	
Oysters (Flat/ Dredge oyster	50	0	
Pāua - Blackfoot	10	1	6
- Yellow-foot	10	2	
Pipi	150	20	
Scallops	10	0	
Tuatua	150	10	

Proposed rock lobster bag limits

Current status	Proposal - Option 1	Proposal – Option 2
No person may take or possess more than 6 rock lobsters on any one day within the FMA.	<p>Two-tier bag limit with demarcation based around the Habitat Line.</p> <p>Daily bag Limit for internal waters (inside the Habitat Line) is 6.</p> <p>Daily bag limit for external waters (outside the Habitat Line) increased to 10.</p>	<p>Two-tier bag limit with demarcation based around the the line that extends across the headlands of each fiord (“Fishing Line”).</p> <p>Daily bag Limit for internal waters (inside the Fishing Line) is 6.</p> <p>Daily bag limit for external waters (outside the Fishing Line) increased to 10.</p>
Accumulation allowed to max. 15 rock lobsters	No accumulation beyond the daily limit.	No accumulation beyond the daily limit.

New app to help recreational fishers

Vanessa Phillips · 12:20, Oct 22 2021



MARTIN DE RUYTER/STUFF

Nelson company Plink Software, Fish Mainland and the Ministry of Primary Industries have developed a new mobile self-reporting recreational fishing application. Video first published in October, 2021.

Recreational fishers in the South Island are welcoming a new app developed in Nelson, which they expect will lead to fairer decisions about the blue cod fishery.

What next?

- Minister accepted our advice and recommendations
- Fisheries NZ initiate formal process for regulatory amendment
 - Public consultation – we will receive your feedback
 - Goes through Cabinet
 - Slow (18 months), but changes to the law in pipeline
- We'd appreciate your support in advocating for the work of the Guardians within your networks